

£725,000

Church Road

Hounslow, TW5 0LU

PROPERTY SUMMARY

Situated on a popular and well regarded road in Church Road Heston, this loft extended four bedroom semi detached house offers spacious and well presented accommodation totalling approximately 1,571 Sq Ft, making it an ideal choice for families or investors.

The property features a modern fitted kitchen complete with a breakfast island. A spacious through lounge creates a bright and versatile living area, perfect for hosting and relaxation.

There are four good sized bedrooms including a master bedroom with ensuite along with a well appointed family bathroom.

Outside the property benefits from a large rear garden, perfect for families and on street parking to the front.

Conveniently located close to well regarded schools, local amenities and transport links.

An internal viewing is highly recommended.

4



3



2

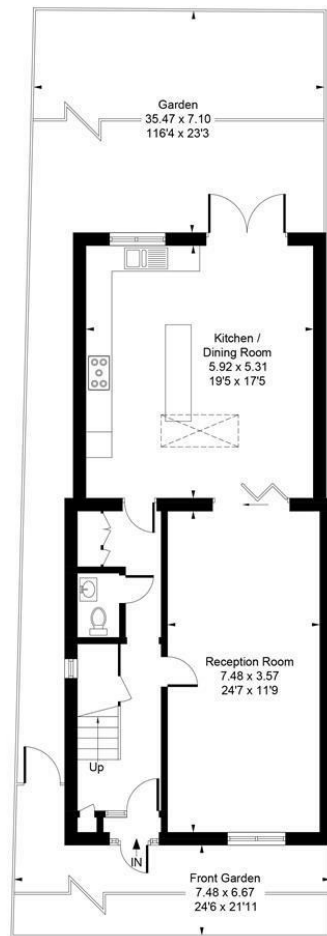




Approximate Gross Internal Area
145.96 sq m / 1571 sq ft



**Shaw
& Co**
ESTATE
AGENTS



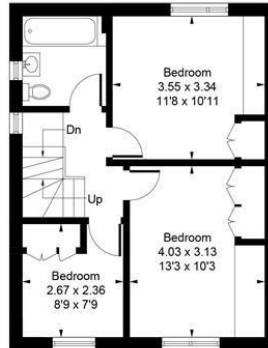
Ground Floor

Whilst every attempt has been made to ensure the accuracy of the floor plan contained here, measurements of doors, windows, rooms and any other items are approximate and no responsibility is taken for any error, omission, or mis-statement.
This plan is for illustrative purposes only and should be used as such by any prospective purchaser.
© Vizion Property Marketing Produced for Shaw & Co.

• Reduced headroom below 1.5m / 5'0



Second Floor



First Floor

LOCAL AUTHORITY

Hounslow

TENURE


Freehold

COUNCIL TAX BAND

D

VIEWINGS

By prior appointment only

Energy Efficiency Rating		Current	Potential
Very energy efficient - lower running costs			
(92 plus) A			
(81-91) B			8
(69-80) C			
(55-68) D		68	
(39-54) E			
(21-38) F			
(1-20) G			
Not energy efficient - higher running costs			
England & Wales		EU Directive 2002/91/EC	



Agents Note: Whilst every care has been taken to prepare these particulars, they are for guidance purposes only. All measurements are approximate and are for general guidance purposes only and whilst every care has been taken to ensure their accuracy, they should not be relied upon and potential buyers/tenants are advised to recheck the measurements

**Shaw
& Co**
ESTATE
AGENTS

OFFICE ADDRESS
10 Central Parade
New Heston Road
Heston
Middlesex
TW5 0LJ

OFFICE DETAILS
0208 570 7258
heston@shawandcoestates.com